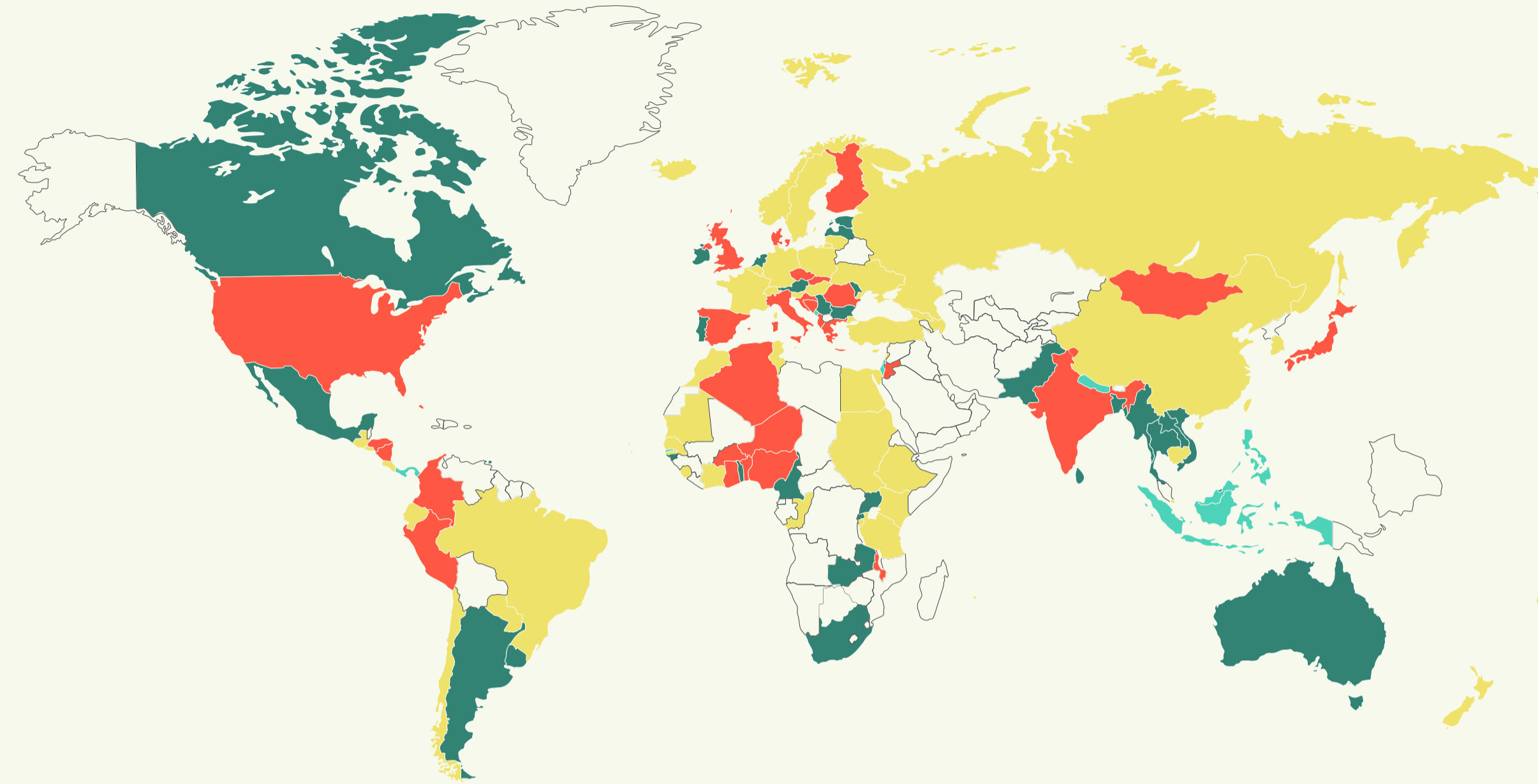


GLOBAL RANKING 2023



% of women occupying positions in international bodies monitored by GQUAL. Only countries with more than one national are ranked.

Updated statistics to **October 2023**



- 90% - 100%
- 80% - 90%
- 70% - 80%
- 60% - 70%
- 55% - 60%
- 40% - 55%
- 30% - 40%
- 20% - 30%
- 10% - 20%
- 0% - 10%

TOTAL OF POSITIONS

595

TOTAL OF WOMEN

255

% OF WOMEN

43%

COUNTRY	TOTAL # OF NATIONALS	TOTAL # OF WOMEN	%
Panama	4	4	100%
Gambia	3	3	100%
Israel	2	2	100%
Montenegro	2	2	100%
Indonesia	3	3	100%
Malaysia	4	4	100%
Nepal	2	2	100%
Philippines	3	3	100%
Cameroon	5	4	80%
Australia	9	7	78%
Trinidad and Tobago	4	3	75%
Bangladesh	4	3	75%
Austria	7	5	71%
Canada	7	5	71%
Ireland	7	5	71%
Netherlands	7	5	71%
Argentina	12	8	67%

COUNTRY	TOTAL # OF NATIONALS	TOTAL # OF WOMEN	%
Barbados	3	2	67%
Rwanda	3	2	67%
Estonia	3	2	67%
Republic of Moldova	3	2	67%
Serbia	3	2	67%
Brunei Darussalam	3	2	67%
Laos People's Republic	3	2	67%
Myanmar	3	2	67%
Pakistan	3	2	67%
Sri Lanka	3	2	67%
Vietnam	3	2	67%
South Africa	8	5	60%
Mexico	10	6	60%
Uruguay	5	3	60%
Togo	5	3	60%
Zambia	5	3	60%
Bulgaria	5	3	60%

COUNTRY	TOTAL # OF NATIONALS	TOTAL # OF WOMEN	%
Latvia	5	3	60%
Uganda	12	7	58%
Portugal	7	4	57%
Thailand	9	5	56%
Bahamas	2	1	50%
Colombia	6	3	50%
Honduras	2	1	50%
Nicaragua	4	2	50%
Algeria	6	3	50%
Benin	2	1	50%
Ghana	4	2	50%
Malawi	2	1	50%
Niger	2	1	50%
Denmark	4	2	50%
Finland	2	1	50%
Greece	4	2	50%
Italy	8	4	50%

COUNTRY	TOTAL # OF NATIONALS	TOTAL # OF WOMEN	%
United Kingdom	8	4	50%
Albania	4	2	50%
Bosnia and Herzegovina	2	1	50%
Croatia	4	2	50%
Czech Republic	4	2	50%
Romania	4	2	50%
Slovakia	2	1	50%
Japan	10	5	50%
Jordan	2	1	50%
Mongolia	2	1	50%
Nigeria	9	4	44%
Spain	9	4	44%
India	9	4	44%
Jamaica	7	3	43%
USA	14	6	43%
Peru	10	4	40%
Burkina Faso	5	2	40%

COUNTRY	TOTAL # OF NATIONALS	TOTAL # OF WOMEN	%
China	8	3	38%
Lebanon	8	3	38%
El Salvador	3	1	33%
Paraguay	3	1	33%
Tunisia	3	1	33%
Iceland	3	1	33%
New Zealand	6	2	33%
Turkey	6	2	33%
Lithuania	3	1	33%
Ukraine	3	1	33%
Republic of Korea	9	3	33%
Singapore	3	1	33%
Kenya	10	3	30%
Sierra Leone	10	3	30%
Germany	10	3	30%
Chile	8	2	25%
Ecuador	4	1	25%

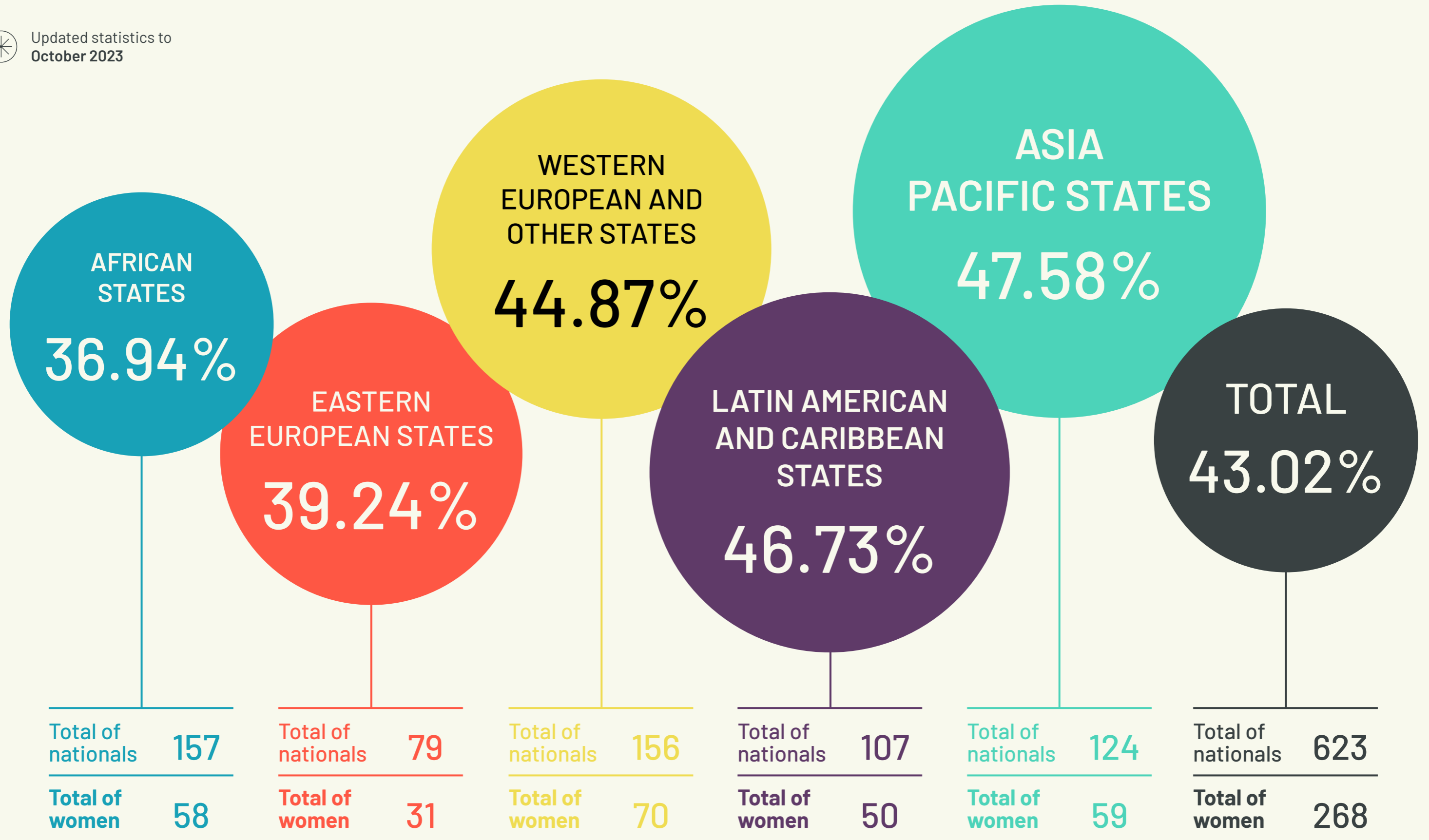
COUNTRY	TOTAL # OF NATIONALS	TOTAL # OF WOMEN	%
Guatemala	4	1	25%
Cote d'Ivoire	4	1	25%
Egypt	4	1	25%
Ethiopia	4	1	25%
Mauritius	4	1	25%
Malta	4	1	25%
Georgia	4	1	25%
Hungary	4	1	25%
France	13	3	23%
Costa Rica	5	1	20%
Belgium	5	1	20%
Russian Federation	6	1	17%
Tanzania	7	1	14%
Senegal	8	1	13%
Poland	8	1	13%
Morocco	11	1	9%
Cambodia	17	1	6%

COUNTRY	TOTAL # OF NATIONALS	TOTAL # OF WOMEN	%
Brazil	5	0	0%
Burundi	2	0	0%
Congo	5	0	0%
Cape Verde	0	0	0%
Mauritania	2	0	0%
Sudan	2	0	0%
Luxembourg	2	0	0%
Norway	2	0	0%
Sweden	2	0	0%
Switzerland	4	0	0%
Azerbaijan	5	0	0%
Slovenia	2	0	0%
Cyprus	3	0	0%
Samoa	3	0	0%

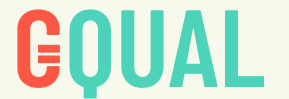
REGIONAL RANKING 2023

% of women holding positions in international bodies monitored by GQUAL, divided by UN Regional Groups.

Updated statistics to October 2023

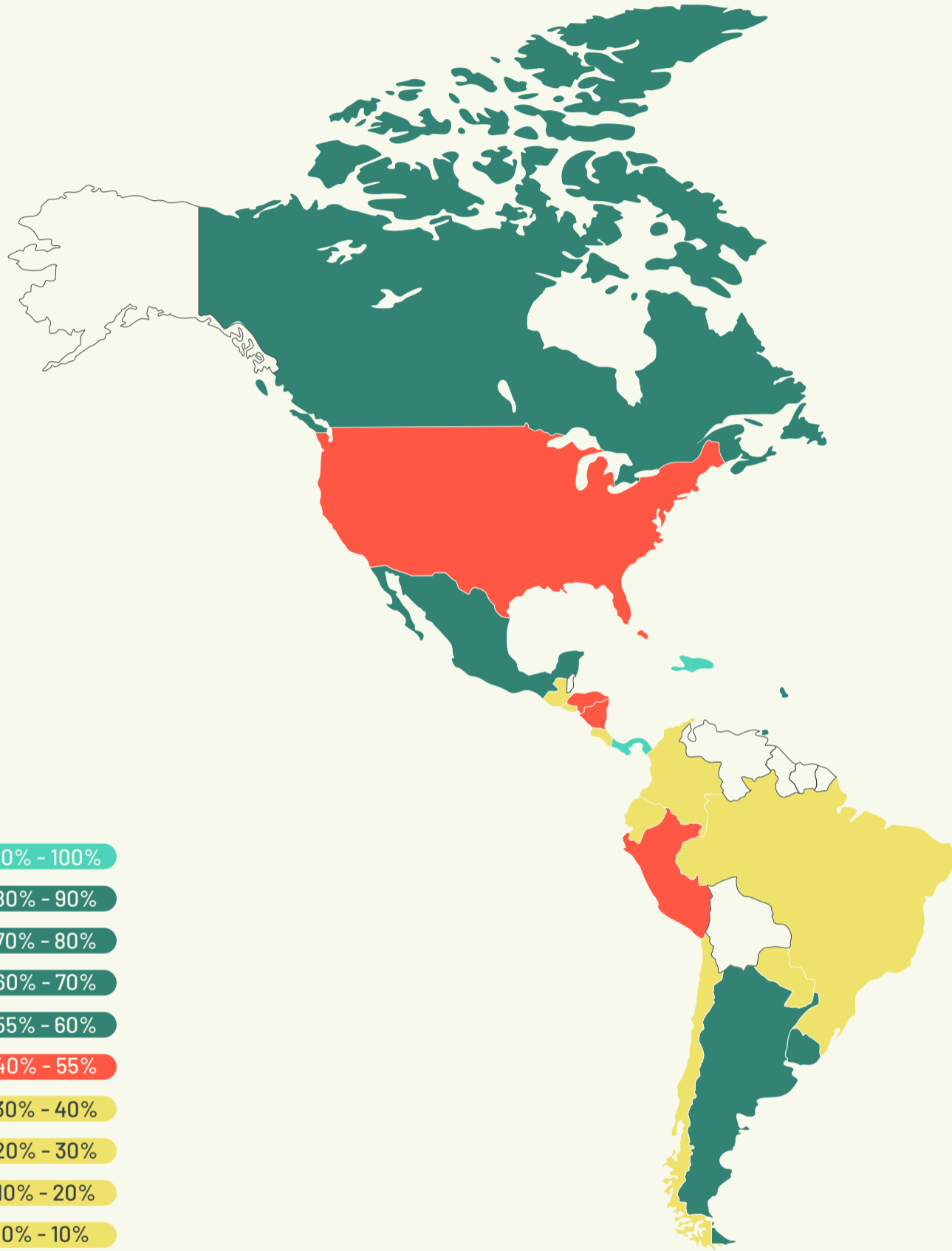


RANKING OEA 2023



Clasificación de los **Estados Miembros de la Organización de los Estados Americanos (OEA)** en función del % de mujeres nacionales de cada país que ocupan posiciones en organismos internacionales, tanto regionales como internacionales, monitoreados por GQUAL.

Actualización a **Octubre 2023**



- 90% - 100%
- 80% - 90%
- 70% - 80%
- 60% - 70%
- 55% - 60%
- 40% - 55%
- 30% - 40%
- 20% - 30%
- 10% - 20%
- 0% - 10%

PAÍSES CON UN SOLO NACIONAL

- Belice
- Bolivia
- San Vicente y las Granadinas
- Surinam
- Venezuela
- Guyana

TOTAL	TOTAL # DE MUJERES	TOTAL # DE VARONES
6	2	4

PAÍSES CON NINGÚN NACIONAL

- Cuba
- Dominica
- Granada
- Haití
- República Dominicana
- San Cristóbal y Nieves
- Santa Lucía
- Antigua y Barbuda

TOTAL DE POSICIONES

115

TOTAL DE MUJERES

46

% DE MUJERES

40%

PAÍSES	TOTAL # DE NACIONALES	TOTAL # DE MUJERES	%
Panamá	4	4	100%
Trinidad y Tobago	4	3	75%
Canadá	7	5	71%
Argentina	12	8	67%
Barbados	3	2	67%
México	10	6	60%
Uruguay	5	3	60%

PAÍSES	TOTAL # DE NACIONALES	TOTAL # DE MUJERES	%
Bahamas	2	1	50%
Honduras	2	1	50%
Nicaragua	4	2	50%
Estados Unidos	14	6	43%
Jamaica	7	3	43%
Perú	10	4	40%
El Salvador	3	1	33%

PAÍSES	TOTAL # DE NACIONALES	TOTAL # DE MUJERES	%
Paraguay	3	1	33%
Chile	8	2	25%
Colombia	6	3	25%
Ecuador	4	1	25%
Guatemala	4	1	25%
Costa Rica	5	1	20%
Brasil	5	0	0%